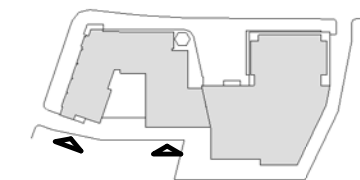




① South Residential Elevation - West
1" = 20'-0"



② South Residential Elevation - East
1" = 20'-0"



Residential Elevations - South

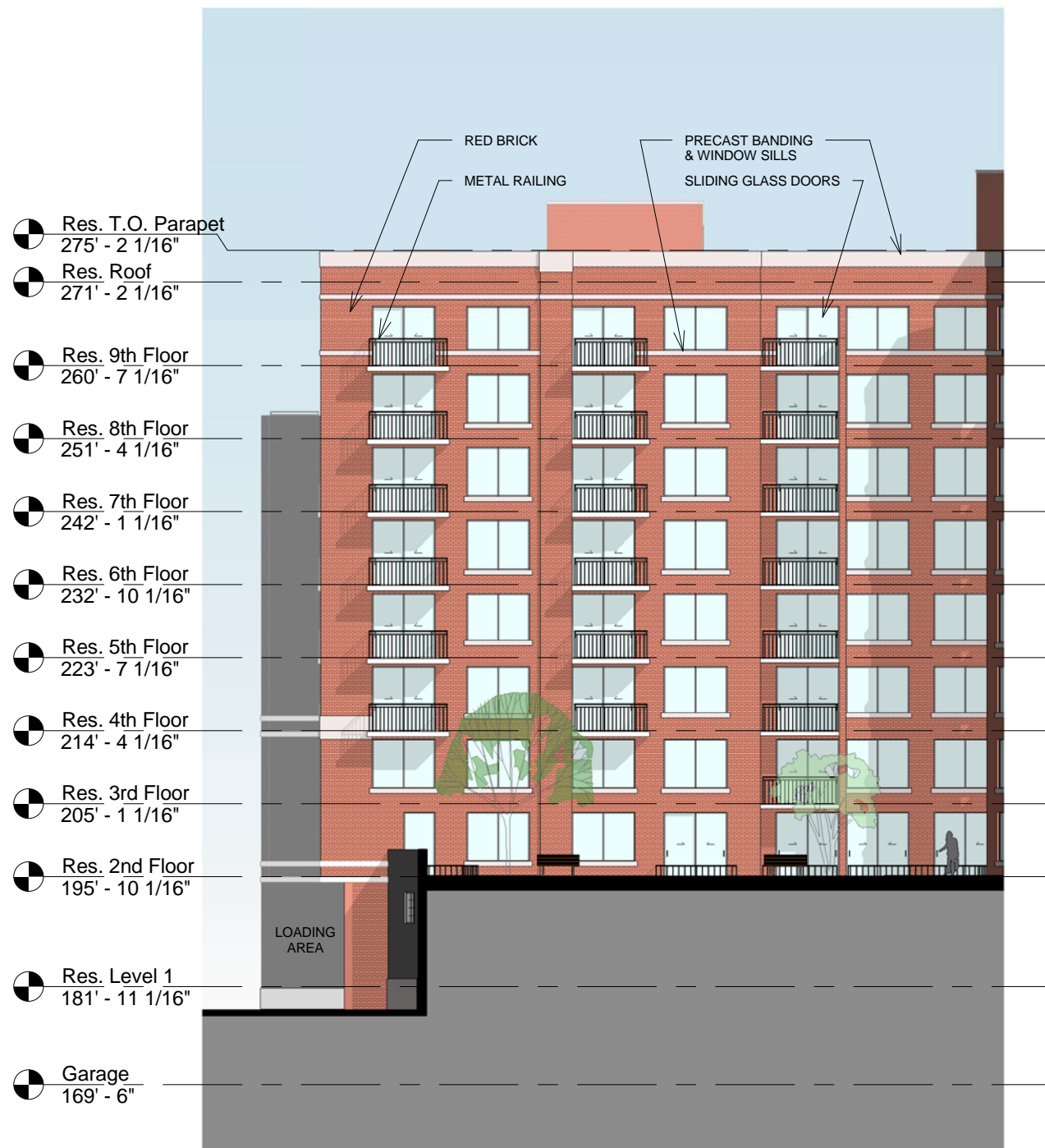
Congress Heights

Square 5914, LLC

mauricewalters | architect

ZONING COMMISSION

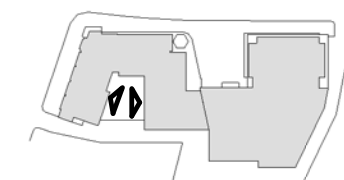
District of Columbia
CASE NO. 16-08
EXHIBIT NO. 15A4



① Residential Court - East
1" = 20'-0"



② Residential Court - West
1" = 20'-0"



Residential - Courtyard Elevations

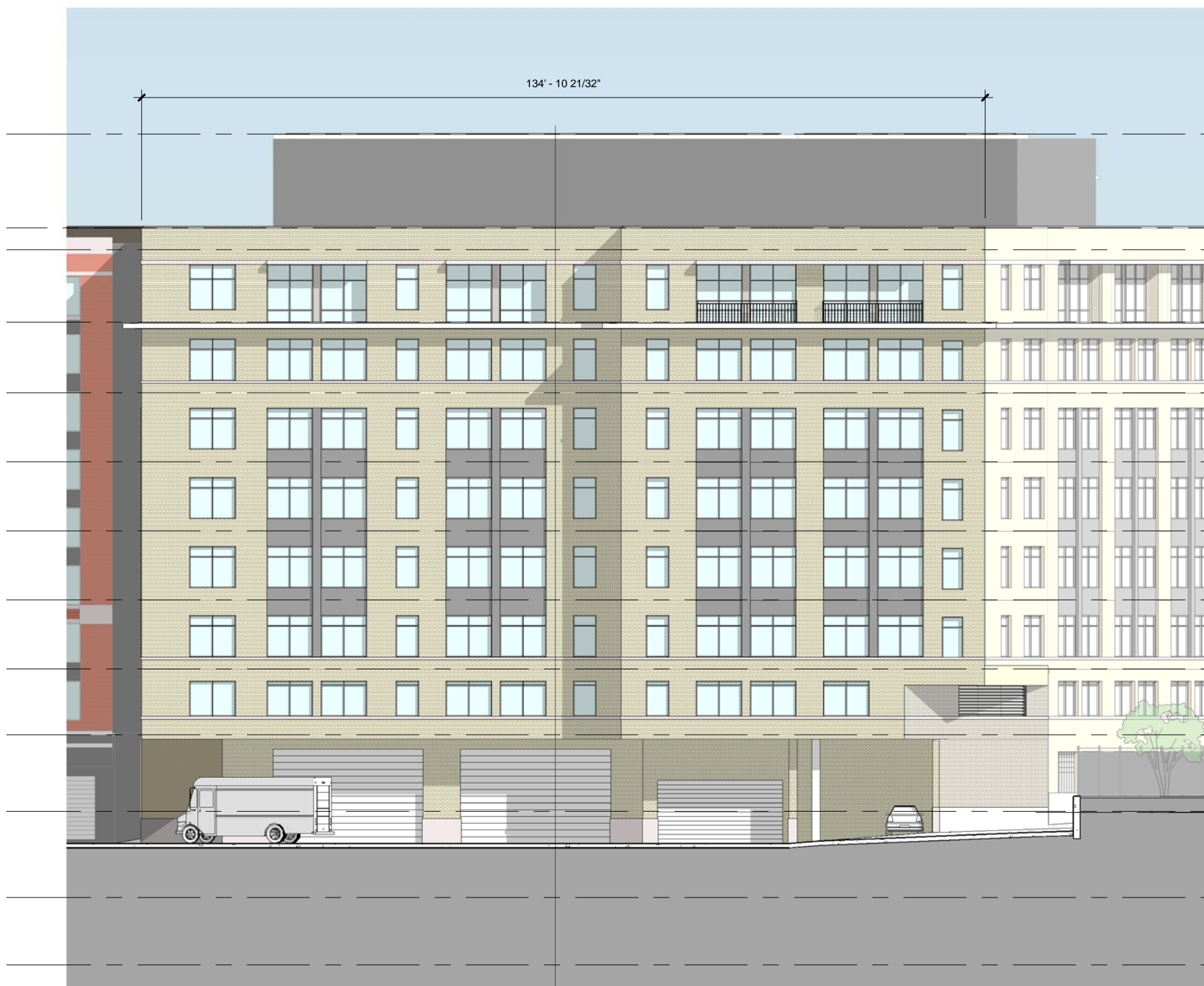
Congress Heights

Square 5914, LLC

maurice **walters** | architect

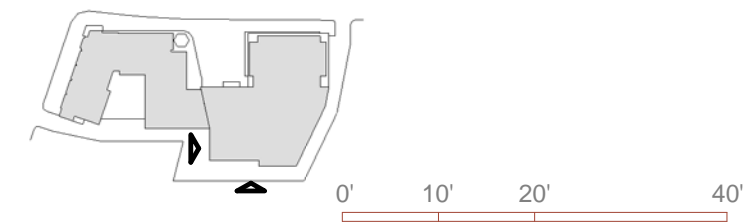


① West Rear Elevation - Office
1" = 20'-0"



② South Elevation - Office
1" = 20'-0"

- T.O. Penthouse
291' - 7 3/32"
- T.O. Parapet
276' - 7 3/32"
- Office Roof
273' - 1 3/32"
- Office 8th Floor
261' - 6 3/32"
- Office 7th Floor
250' - 2 19/32"
- Office 6th Floor
239' - 2 3/32"
- Office 5th Floor
228' - 1 19/32"
- Office 4th Floor
217' - 1 3/32"
- Office 3rd Floor
206' - 0 19/32"
- Office 2nd Floor
195' - 6 3/32"
- Office 1st Floor
183' - 3 1/4"
- Meas. Pt. (Office)
183' - 1 3/32"
- Garage
169' - 6"
- Garage 2
158' - 8 1/2"



South Elevation - Office

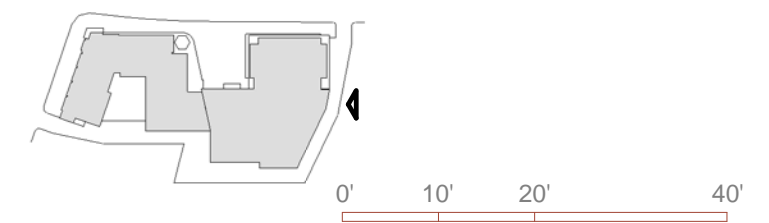
Congress Heights

Square 5914, LLC

mauricewalters | architect



① East Elevation - Office
1" = 20'-0"



East Elevation

Congress Heights

Square 5914, LLC

maurice **walters** | architect

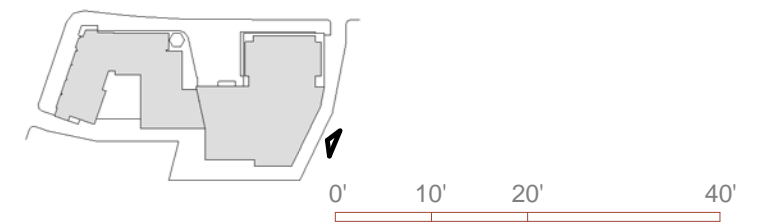


① Southeast Elevation - Office
1" = 20'-0"

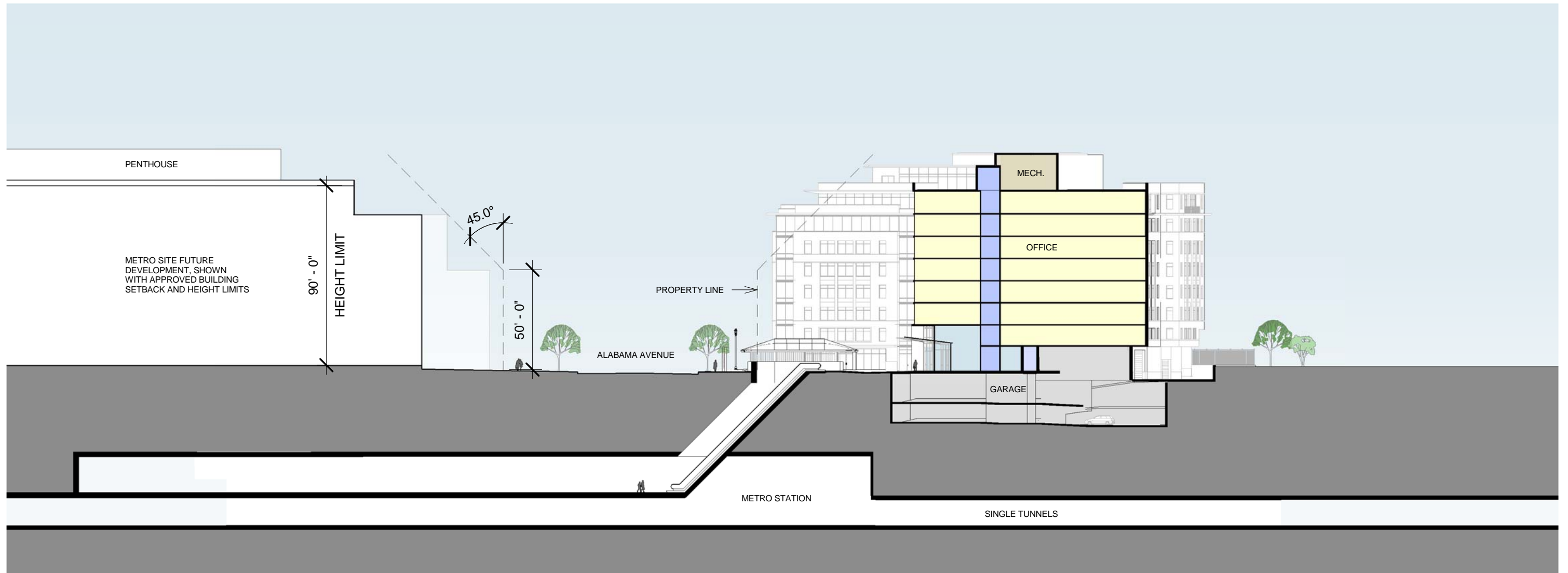
Southeast Elevation - Office

Congress Heights

Square 5914, LLC



mauricewalters | architect

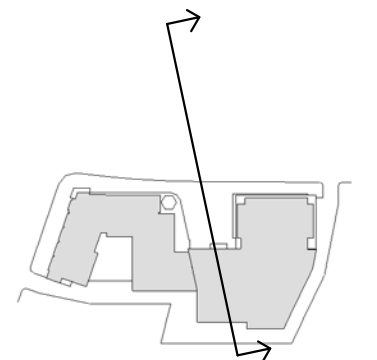


① Section Thru Alabama Ave.
1" = 50'-0"

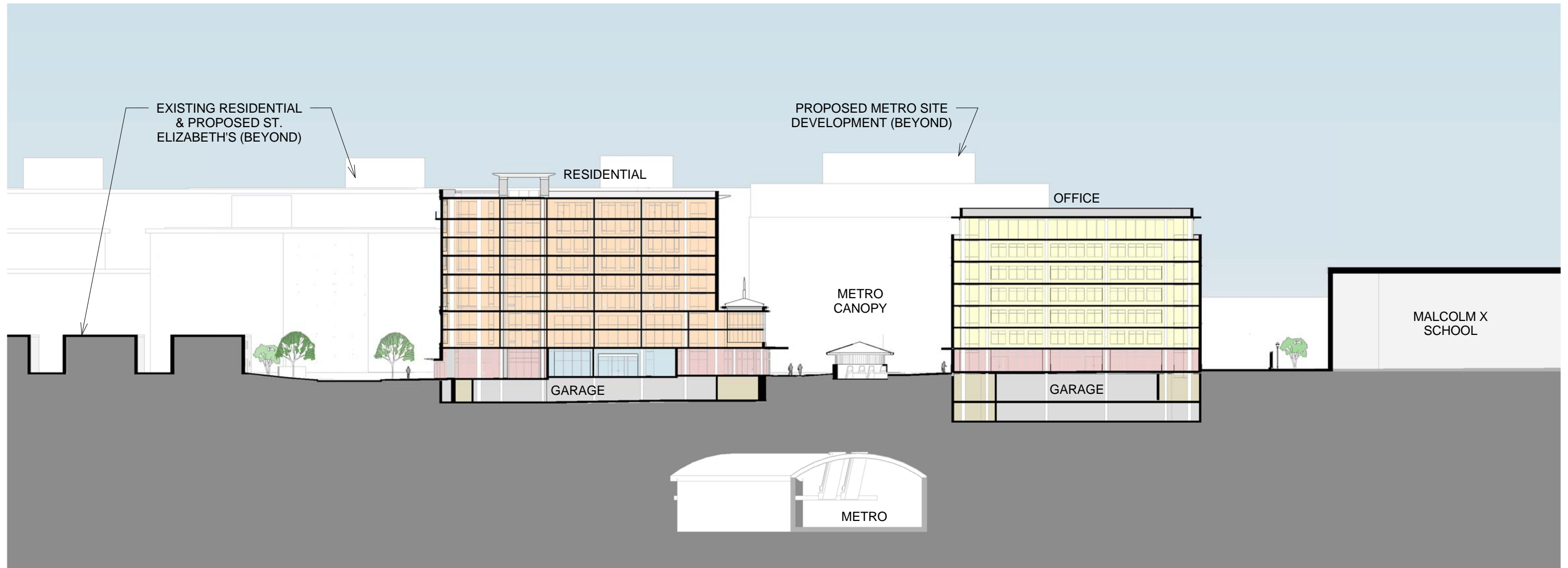
Site Section through Metro

Congress Heights

Square 5914, LLC



maurice walters | architect

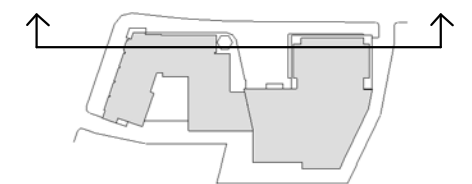


① Section Thru Metro Plaza
1" = 50'-0"

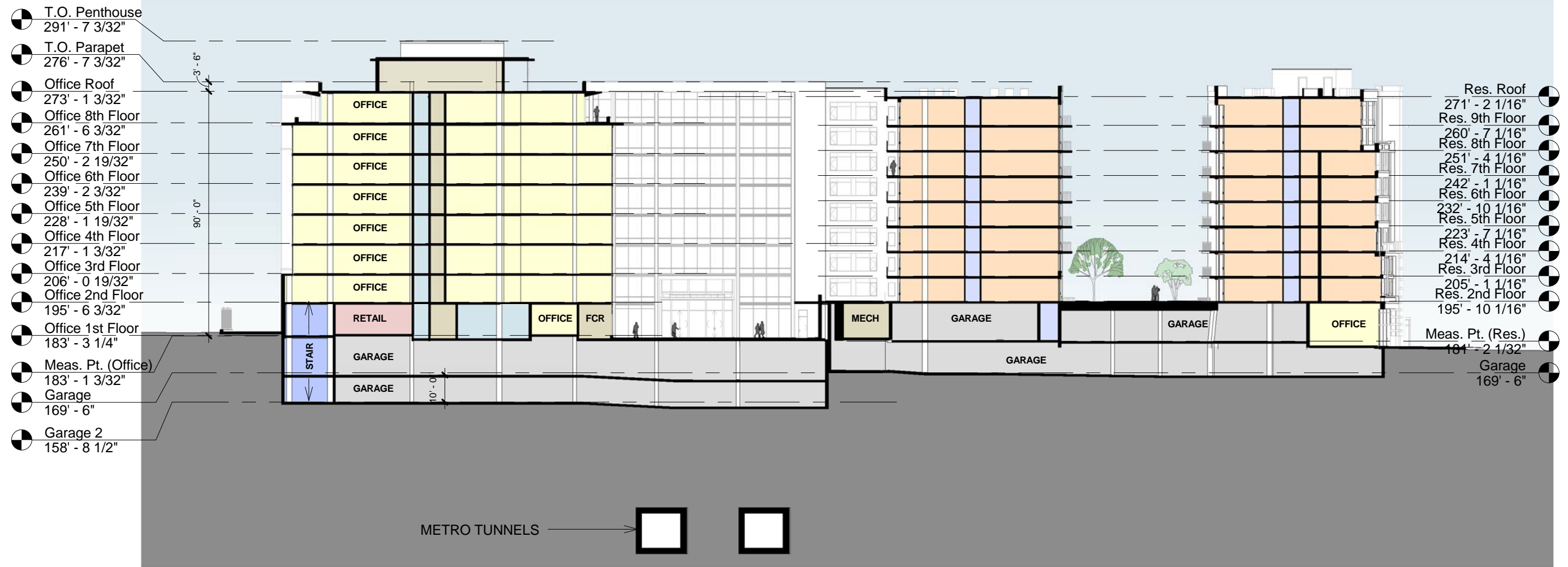
Site Section through 13th Street

Congress Heights

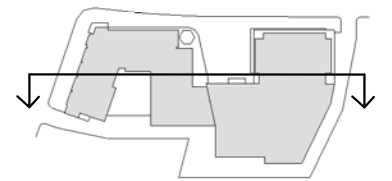
Square 5914, LLC



maurice walters | architect



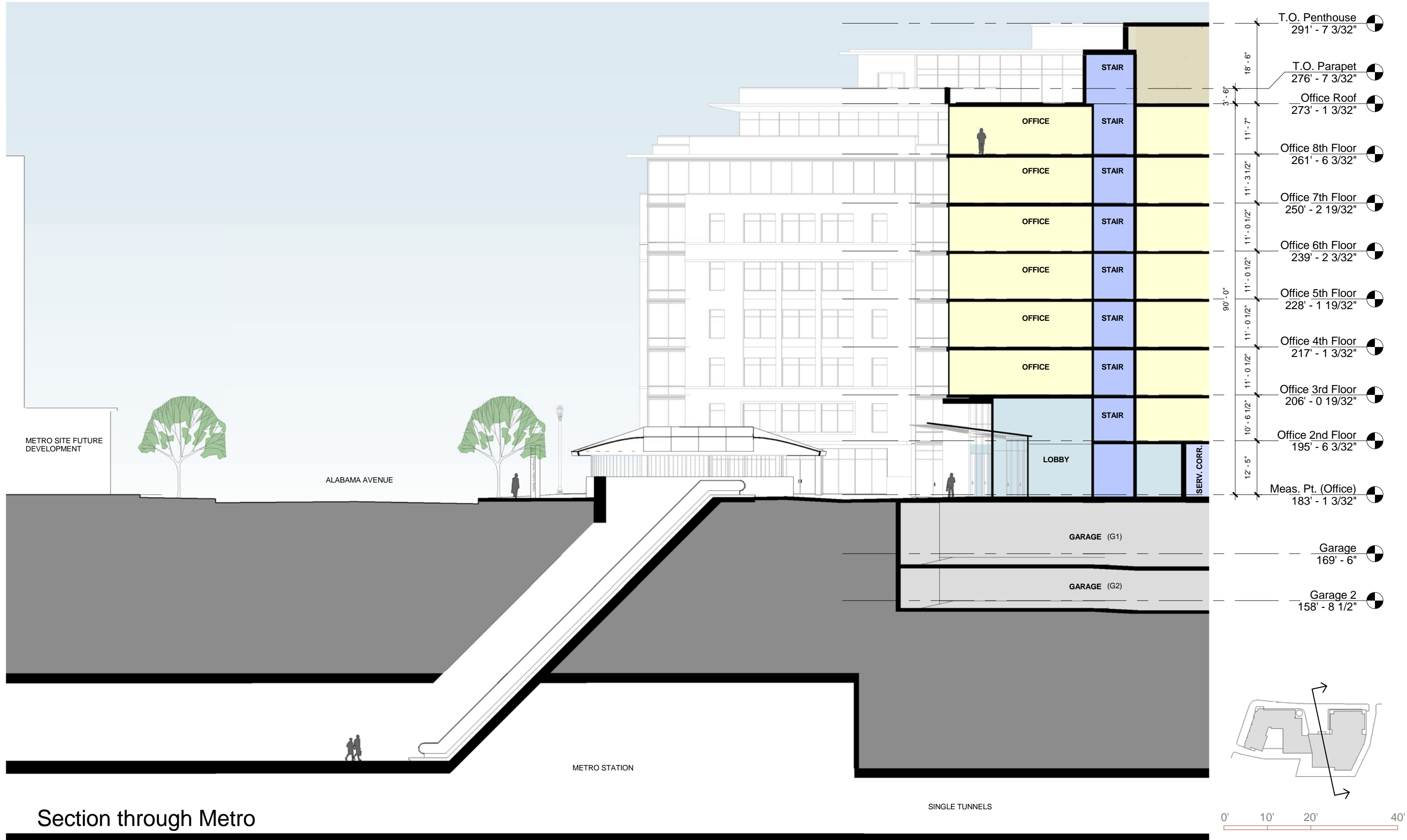
① Longitudinal - Looking South
 1" = 40'-0"

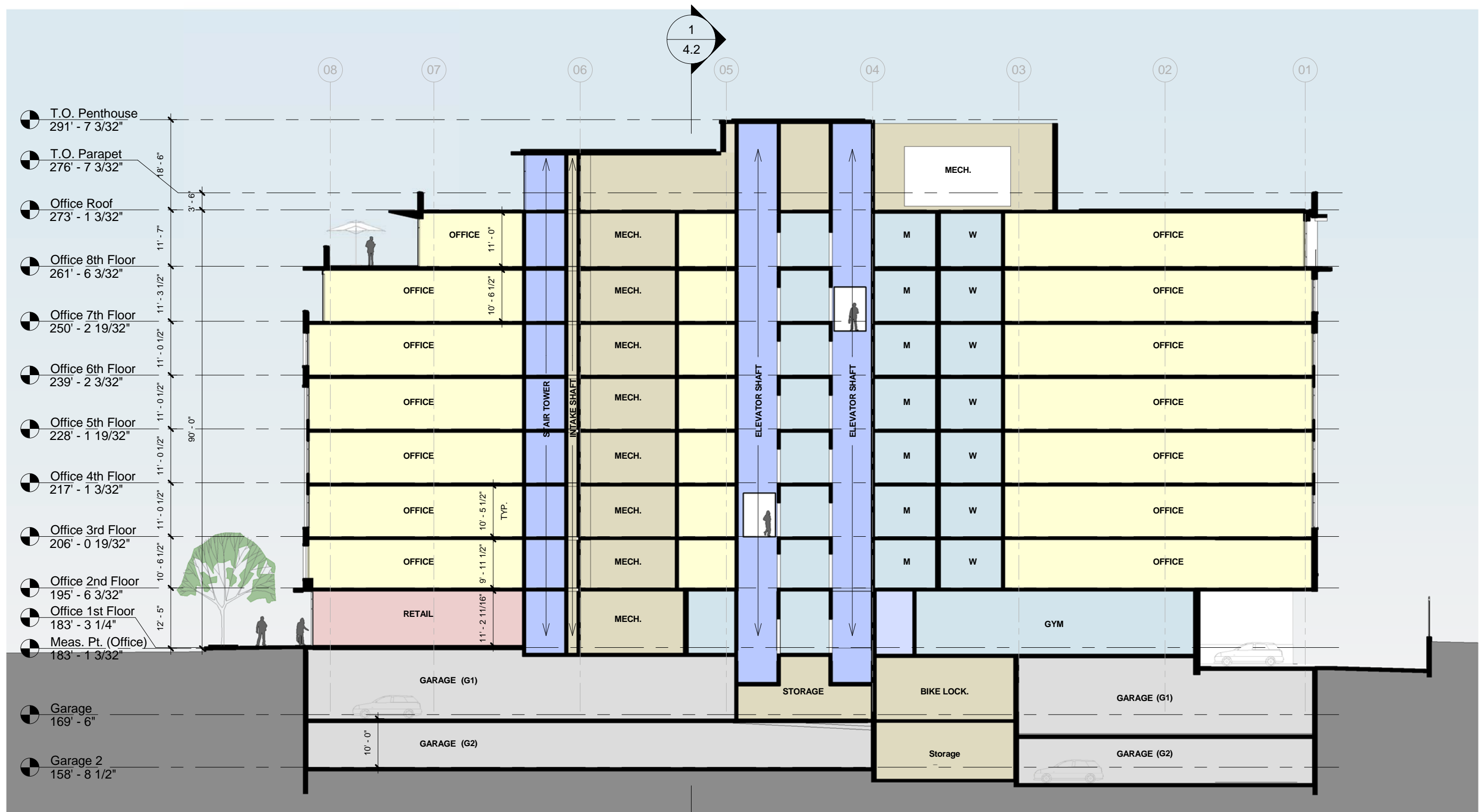


Section - Longitudinal

Congress Heights

Square 5914, LLC



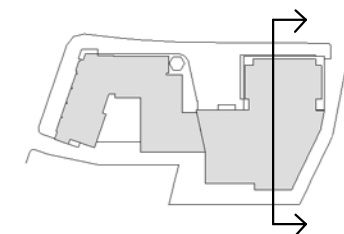


1 Section - Office
1" = 20'-0"

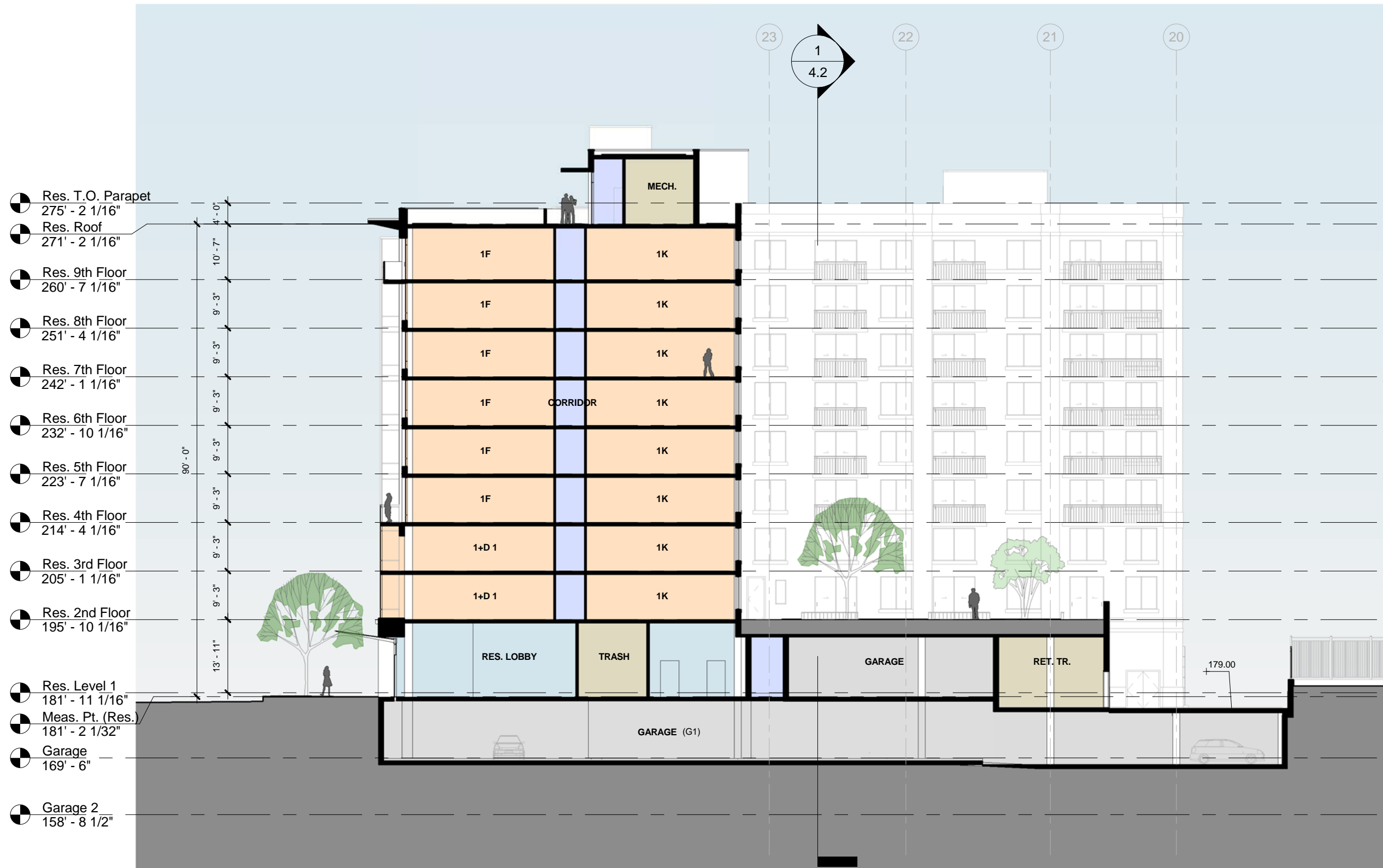
Section - Office

Congress Heights

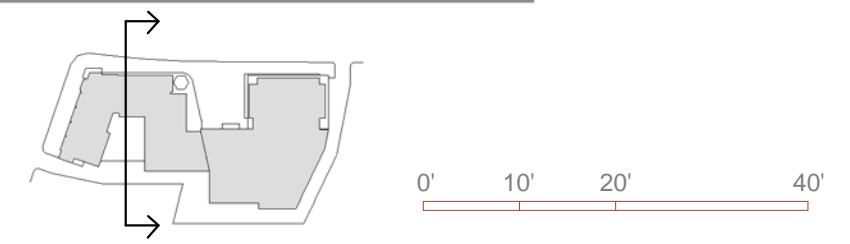
Square 5914, LLC



maurice walters | architect



1 Section - Residential
1" = 20'-0"



Section - Residential

Congress Heights

Square 5914, LLC

maurice **walters** | architect



OFFICE BUILDING RETAIL



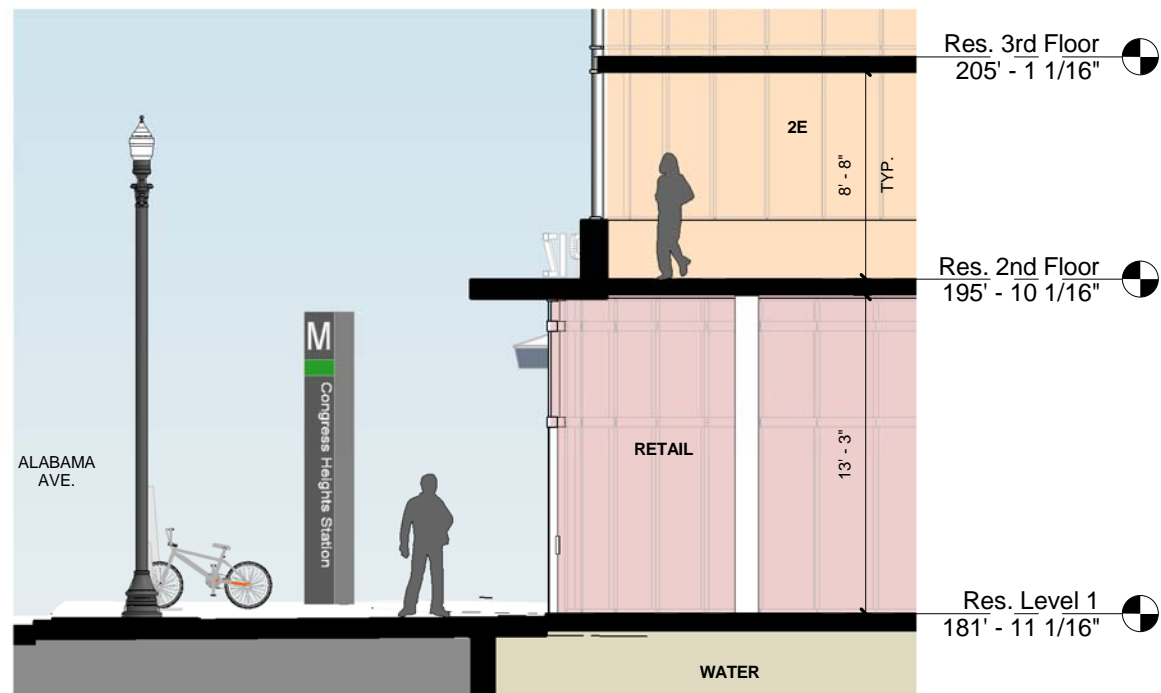
RESIDENTIAL BUILDING RETAIL AT 13TH & ALABAMA

Retail Views - Alabama Ave.

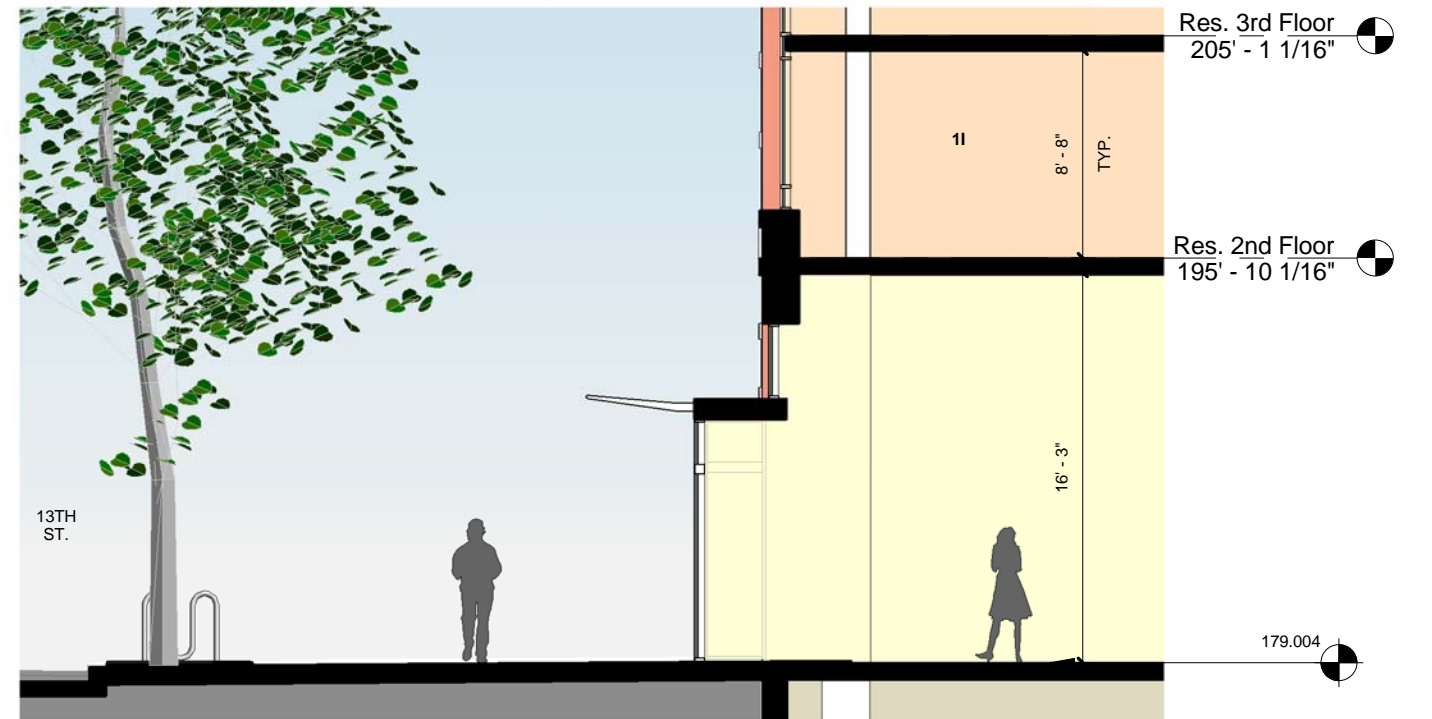
Congress Heights

Square 5914, LLC

maurice walters | architect



1 Street Section - Metro Plaza Retail
1/8" = 1'-0"



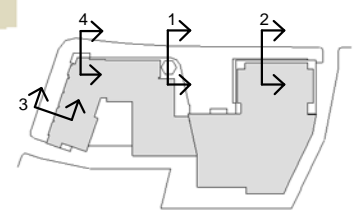
3 Street Section - South Office on 13th
1/8" = 1'-0"



2 Street Section - Office Retail
1/8" = 1'-0"



4 Street Section - Residential Corner Retail
1/8" = 1'-0"



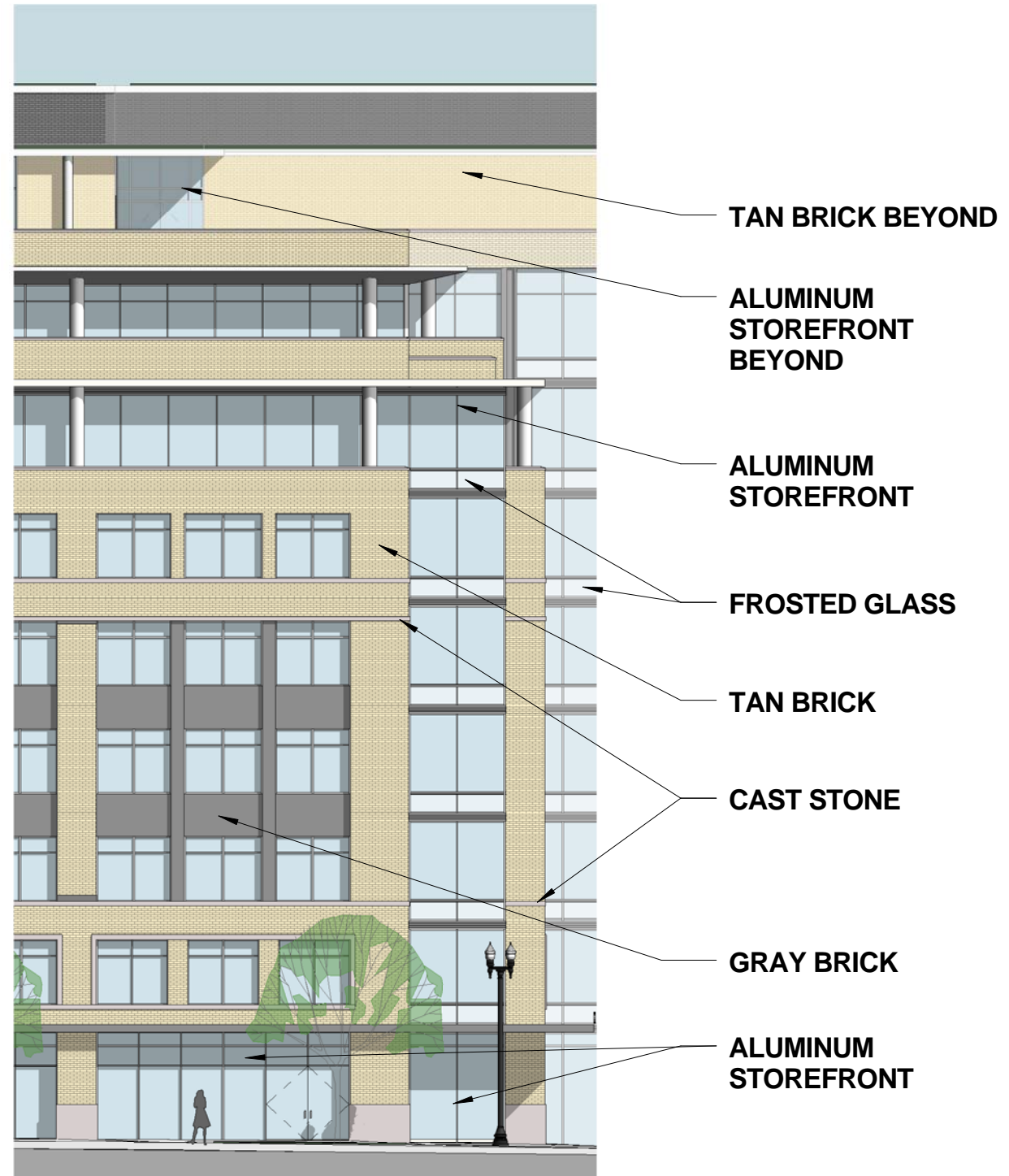
Street Sections - Retail Spaces

Congress Heights

Square 5914, LLC



① Axon of Typical Bay (Office)

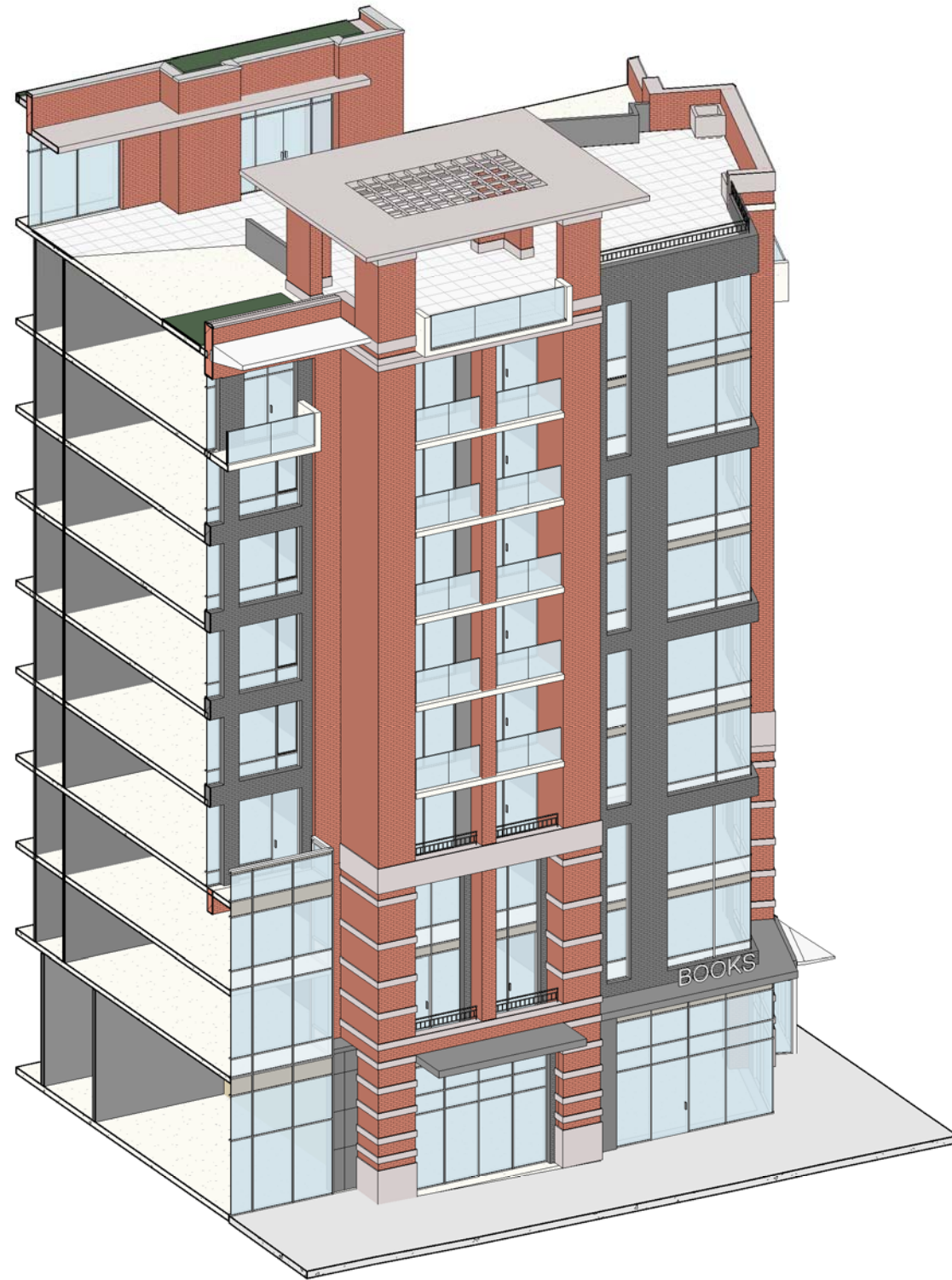


② Typical Bay Study - Office
1/16" = 1'-0"

Typical Bay Study - Office

Congress Heights

Square 5914, LLC



① Axon of Typical Bay (Residential)

Typical Bay Study - Residential

Congress Heights

Square 5914, LLC



- CAST STONE
- ALUMINUM STOREFRONT BEYOND
- FROSTED GLASS RAILING
- RED BRICK
- GRAY BRICK
- ALUMINUM STOREFRONT

② Typical Bay Study - Residential
1/16" = 1'-0"



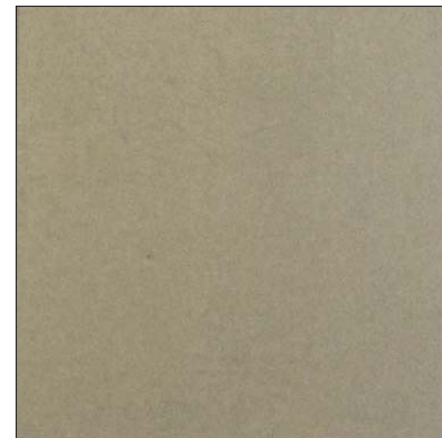
TAN BRICK - GLEN GERY - EXTRUDED - CONCORD VELOUR



GRAY BRICK - PVB - DARK IRONSPOT, SMOOTH MODULAR



PRECAST STONE - WHITESTONE



STOREFRONT & WINDOWS



GRANITE BASE

Materials - Office

Congress Heights

Square 5914, LLC

maurice walters | architect



RED BRICK - GLEN GERY - RED IRONSPOT BLADECUT



GRAY BRICK - PVB - DARK IRONSPOT, SMOOTH MODULAR



PRECAST STONE - WHITESTONE



STOREFRONT & WINDOWS



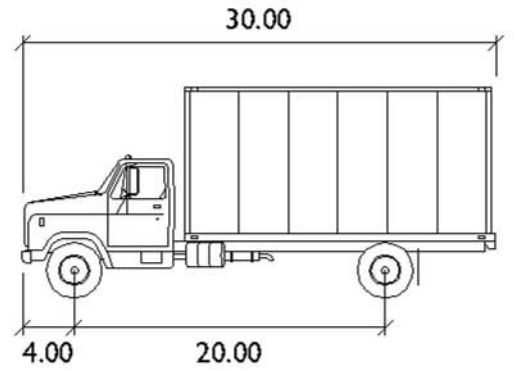
GRANITE BASE

Materials - Residential

Congress Heights

Square 5914, LLC

maurice walters | architect



SU	feet
Width	: 8.00
Track	: 8.00
Lock to Lock Time	: 6.0
Steering Angle	: 31.8

SCALE: 1" = 50'

Figure 1
SU 30 Entering Eastbound From Alabama Avenue to Residential Loading Dock

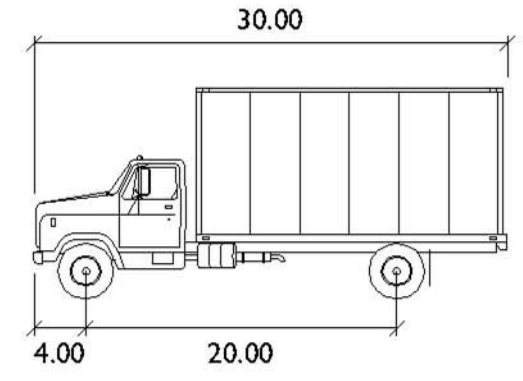
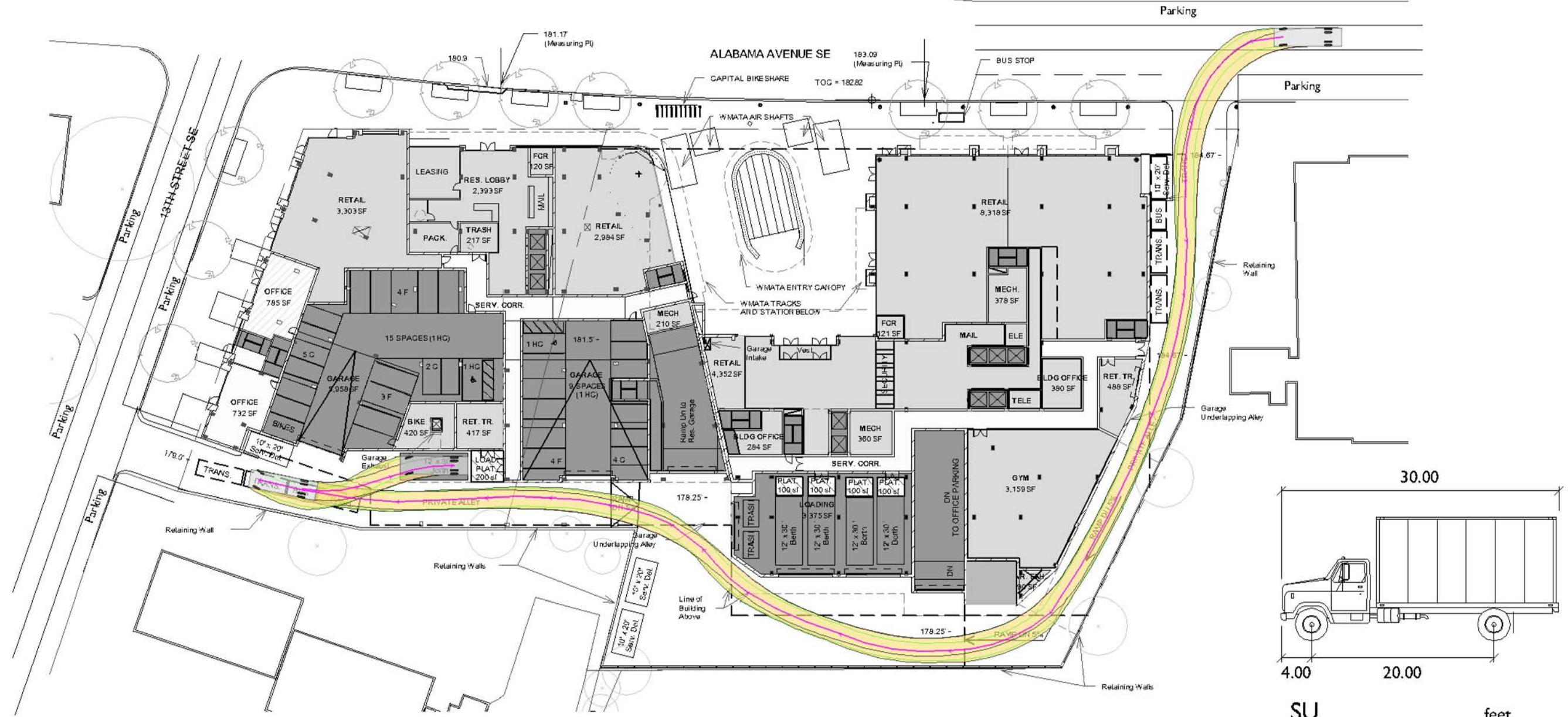
- Vehicle Body
- Front Tire Tread
- Rear Tire Tread
- Directional Path
- Vehicle Path



North



maurice walters | architect



SU	feet
Width	: 8.00
Track	: 8.00
Lock to Lock Time	: 6.0
Steering Angle	: 31.8

SCALE: 1" = 50'

Figure 2
SU 30 Entering Westbound From Alabama Avenue to Residential Loading Dock

- Vehicle Body
- Front Tire Tread
- Rear Tire Tread
- Directional Path
- Vehicle Path



maurice **walters** | architect

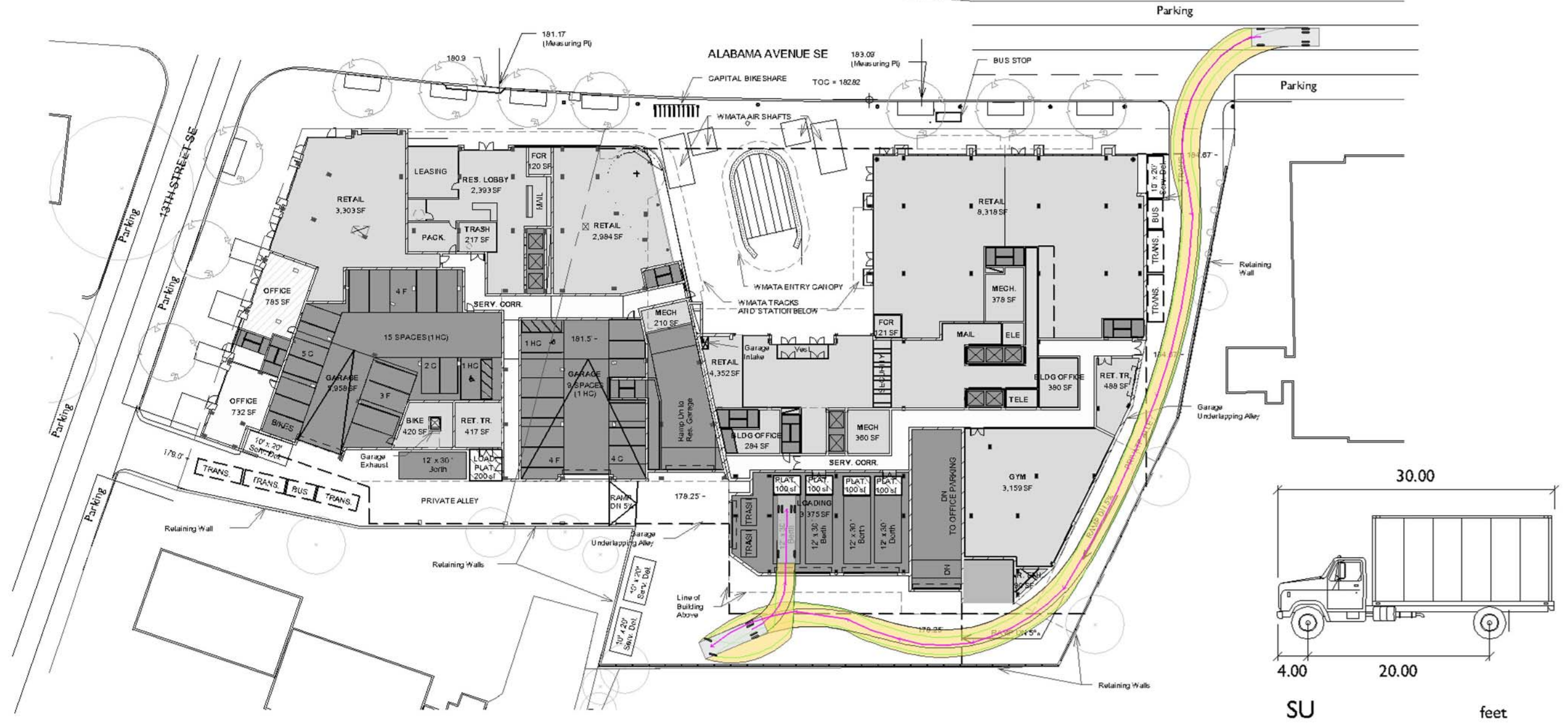


Figure 3
SU 30 Entering Westbound From Alabama Avenue to Western Commercial Loading Dock

- Vehicle Body
- Front Tire Tread
- Rear Tire Tread
- Directional Path
- Vehicle Path

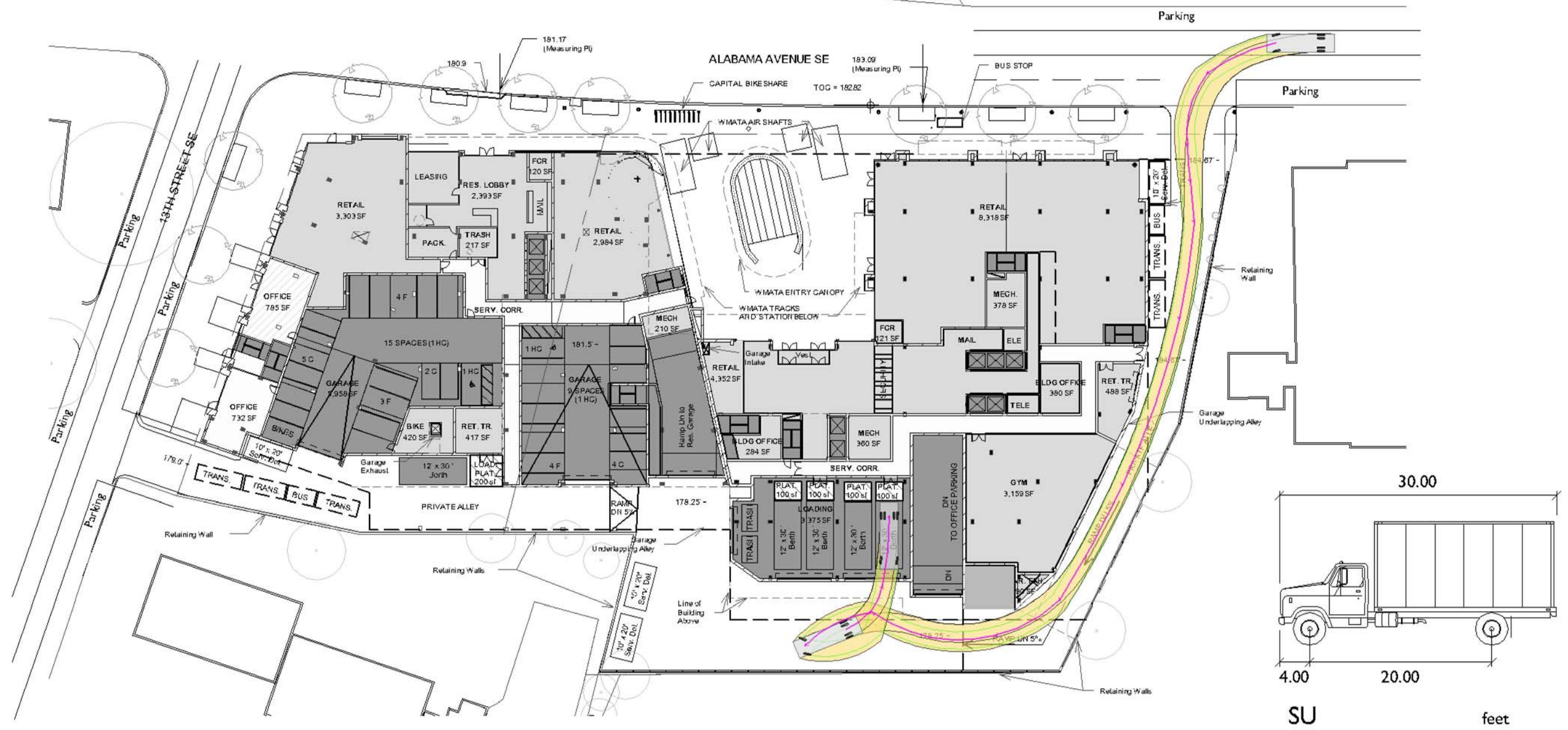


maurice **walters** | architect

Congress Heights

Square 5914, LLC

O:\PROJECTS\5501-6000\5728 1333 ALABAMA AVENUE\GRAPHICS\AUTOTURNS\5728_AUTOTURNS - 4.17.2013.DWG



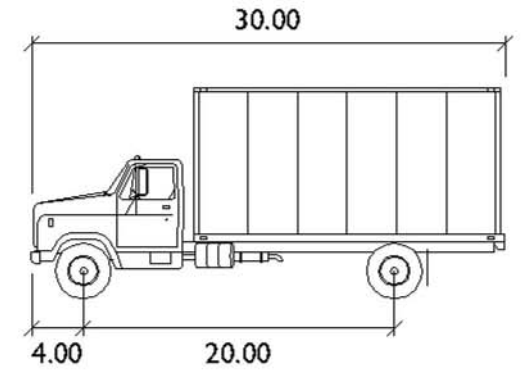
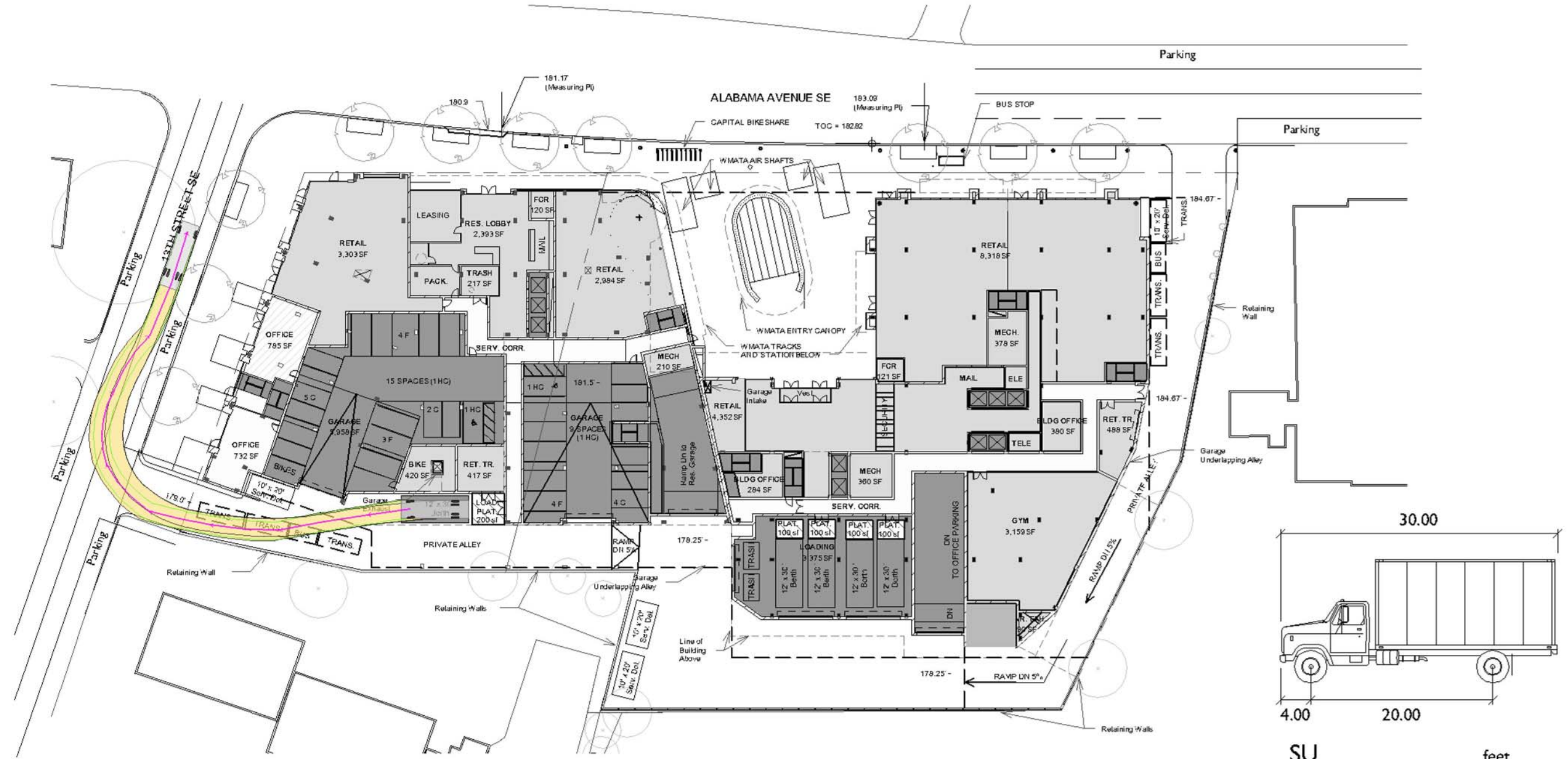
SU	feet
Width	: 8.00
Track	: 8.00
Lock to Lock Time	: 6.0
Steering Angle	: 31.8

SCALE: 1" = 50'

Figure 4
SU 30 Entering Westbound From Alabama Avenue to Eastern Commercial Loading Dock

- Vehicle Body
- Front Tire Tread
- Rear Tire Tread
- Directional Path
- Vehicle Path





SU	feet
Width	: 8.00
Track	: 8.00
Lock to Lock Time	: 6.0
Steering Angle	: 31.8

SCALE: 1" = 50'

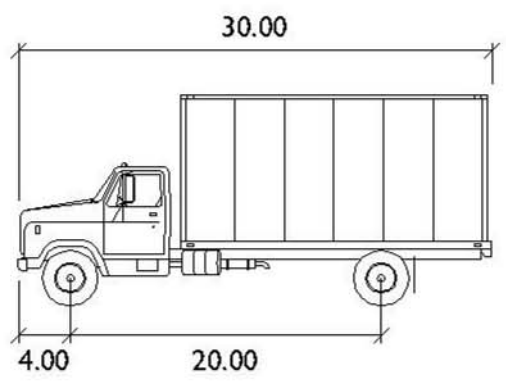
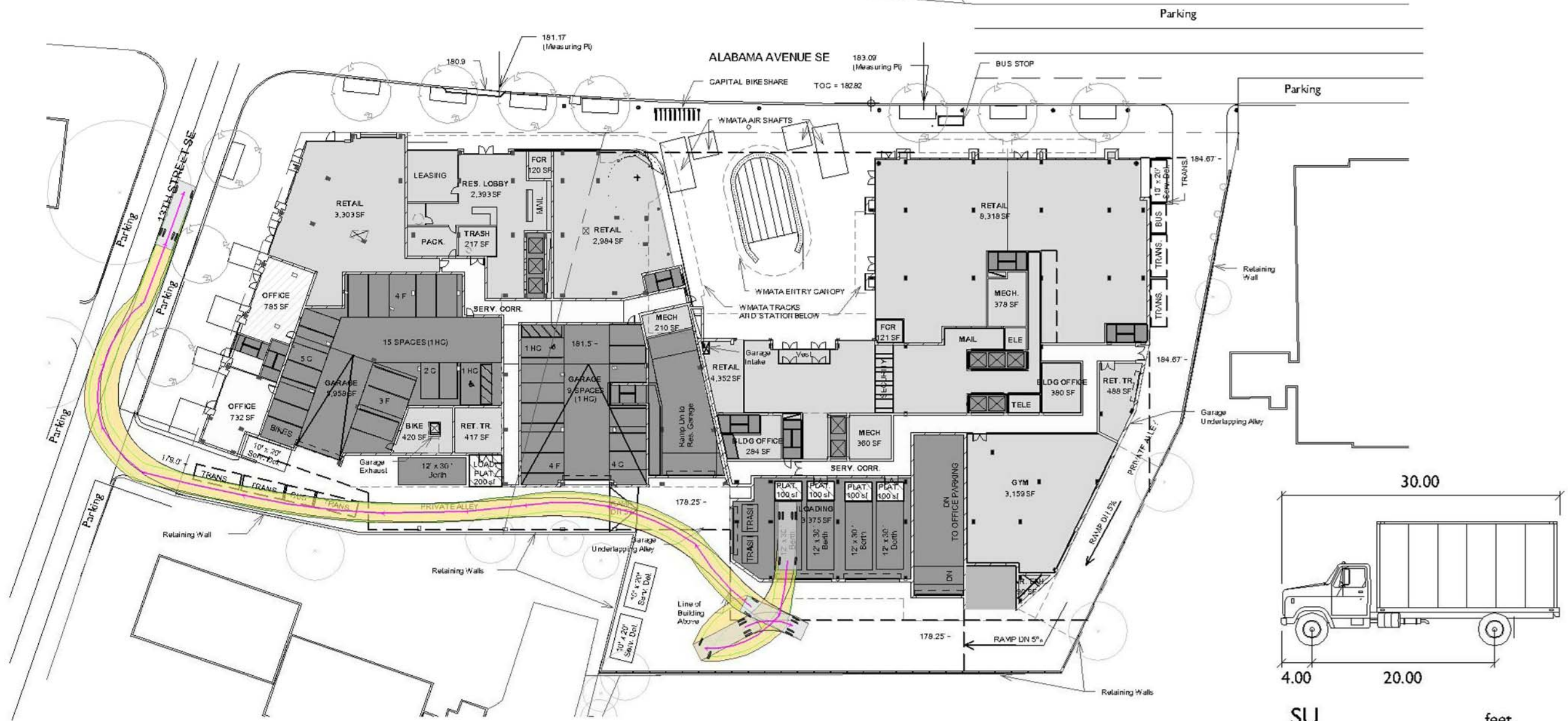
Figure 5
SU 30 Exiting Residential Loading Dock

- Vehicle Body
- Front Tire Tread
- Rear Tire Tread
- Directional Path
- Vehicle Path



North





SU	feet
Width	: 8.00
Track	: 8.00
Lock to Lock Time	: 6.0
Steering Angle	: 31.8

SCALE: 1" = 50'

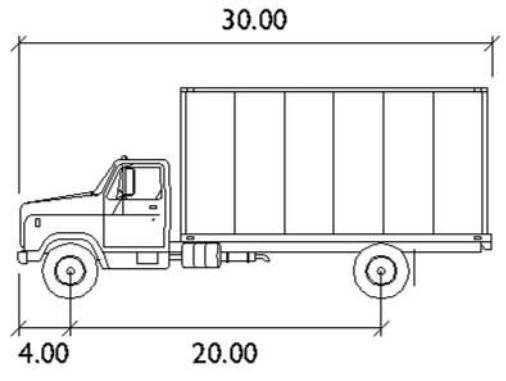
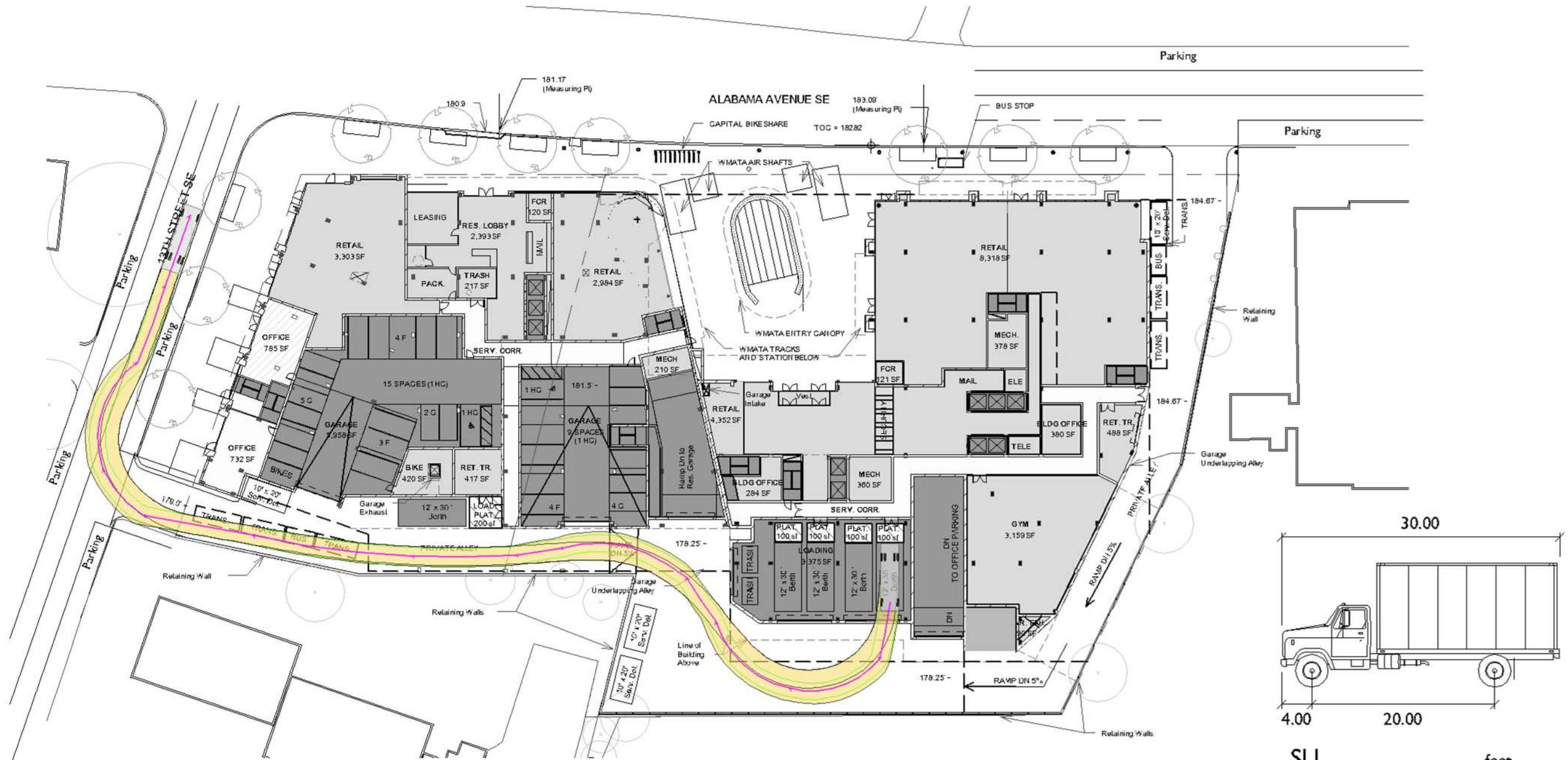
Figure 6
SU 30 Exiting Western Commercial Loading Dock

- Vehicle Body
- Front Tire Tread
- Rear Tire Tread
- Directional Path
- Vehicle Path



maurice walters | architect

O:\PROJECTS\5501-6000\5728 1333 ALABAMA AVENUE\GRAPHICS\AUTOTURNS\5728_AUTOTURNS - 4.17.2013.DWG



SU	feet
Width	: 8.00
Track	: 8.00
Lock to Lock Time	: 6.0
Steering Angle	: 31.8

SCALE: 1" = 50'

Figure 7
SU 30 Exiting Eastern Commercial Loading Dock

- Vehicle Body
- Front Tire Tread
- Rear Tire Tread
- Directional Path
- Vehicle Path



North



maurice **walters** | architect